

Conserve Water for Kane

Presented to NWPA TAC
March 25, 2025

Margaret Schneemann

Haider Mehdi

Illinois Indiana Sea Grant & University of Illinois Extension

Background

Municipal water sources, average source mix, 2013-2018

Growing Population

Kane County population forecasted to increase by about 25% and employment 12% by 2050 (Source: CMAP, 2024)

Surface Water Supply Limits

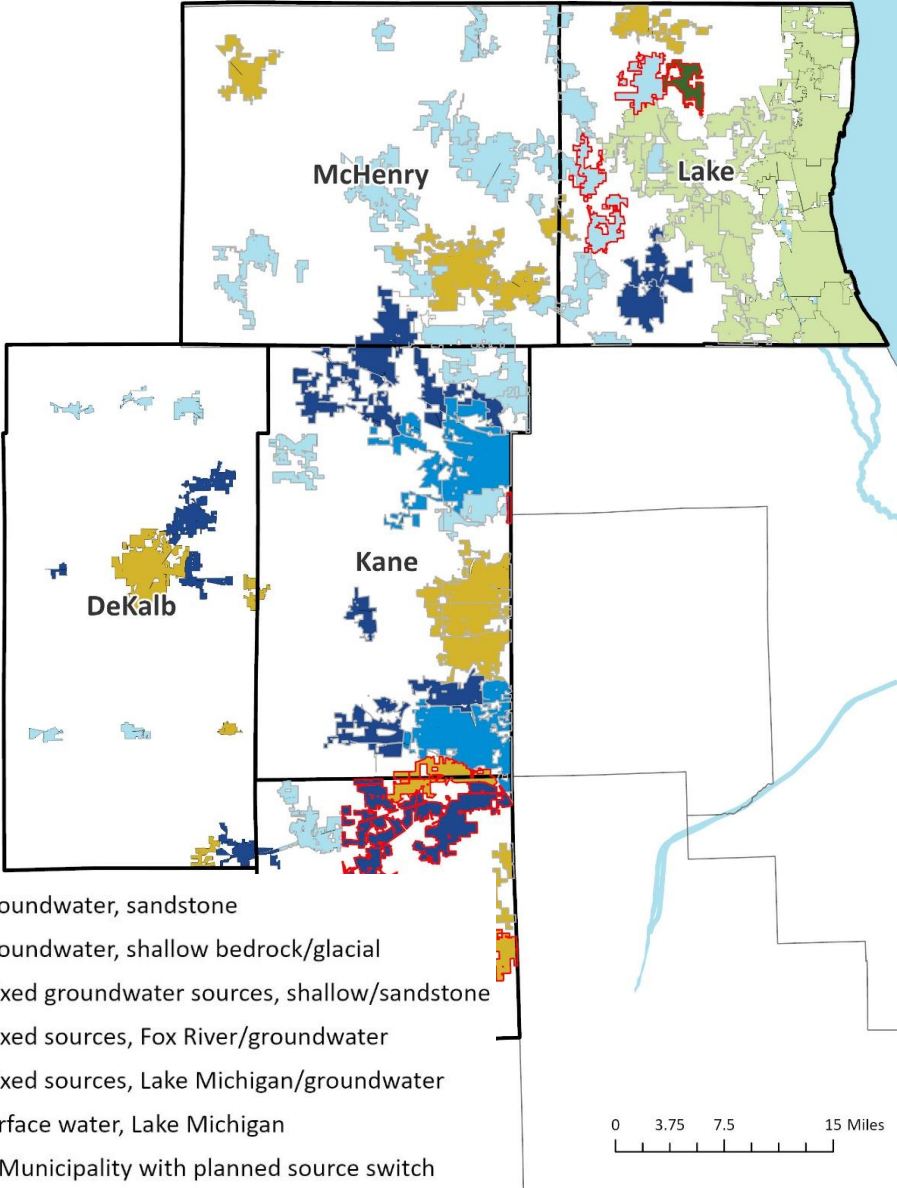
- Lake Michigan Supreme Court Decree
- Inland Surface Water Regulations
- Contamination vulnerability

Deep Bedrock Aquifer

Excessive drawdown, Decrease well yields, Increased pumping expenses. Well inoperability

Shallow Aquifer

Contamination vulnerability, Interference drawdown, including stream flow capture



Key question

How will Kane county provide millions more gallons of additional water supply to accommodate more than a hundred thousand more people?

Demand Reduction needed (MGD) to align with groundwater sustainable supply, 2050	Potential water savings across groundwater sources, 100% participation (MGD)
12.6	12.7

Economics of Water Conservation

Water conservation is the least expensive supply source compared to options like new sources, recycled water, or desalination (reverse osmosis).

Average Benefit-Cost Ratio of 2.0

Source: Schneemann, 2008 *Economic Value of Regional Water Supply Planning*

a beneficial approach for
Kane County

Benefits +

- Deferral and/or downsizing of planned capital facilities
- Reduced operation and maintenance expenses
- Enhanced reputation and customer relations
- Avoided wastewater treatment costs as well as reduced energy costs.
- Environmental and ecosystem services

Costs \$

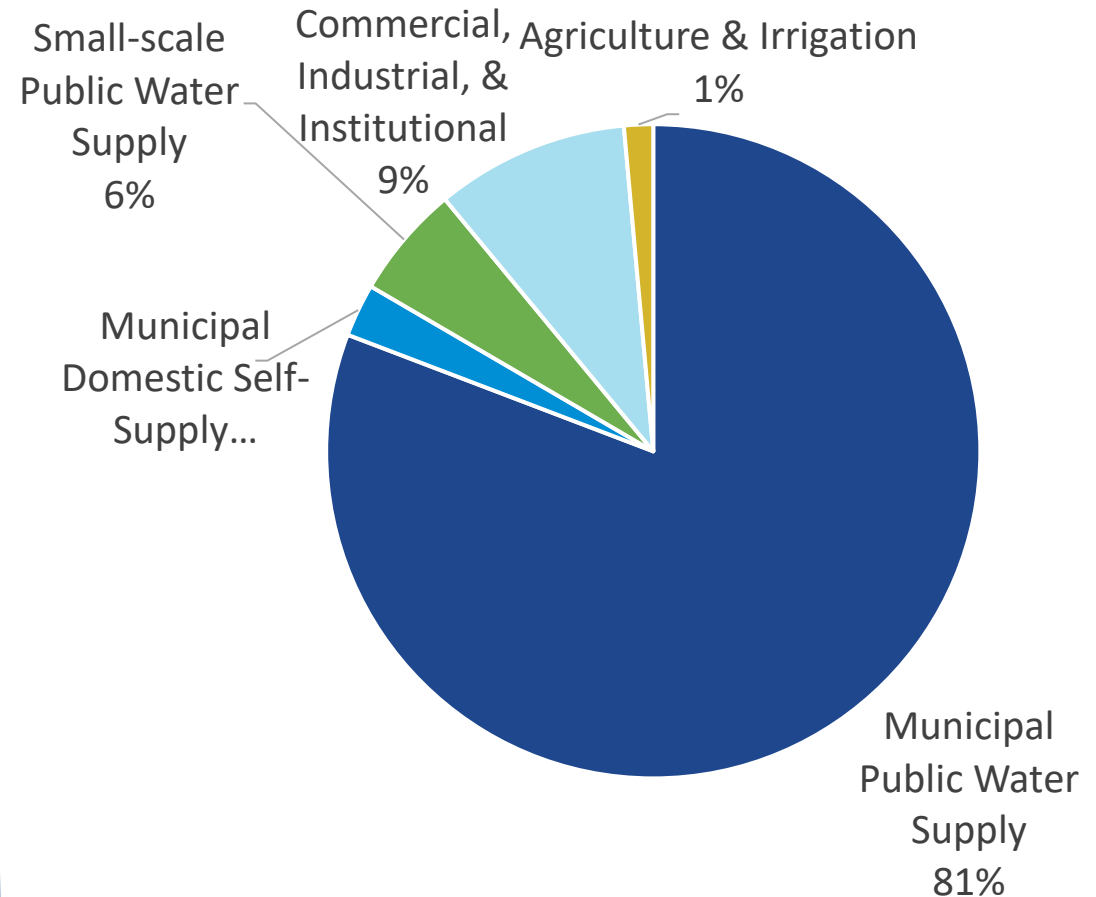
- Planning
- Implementation
- Revenue adjustments

Municipal public water systems account for the largest share of water withdrawals in the NWPA region

The median population served by municipal PWS systems is 15,000 people

Source: Regional Water Demand Forecast for Northeastern Illinois, 2020-2050, 2024

Share of water use by sector across the NWPA region in MGD, 2018

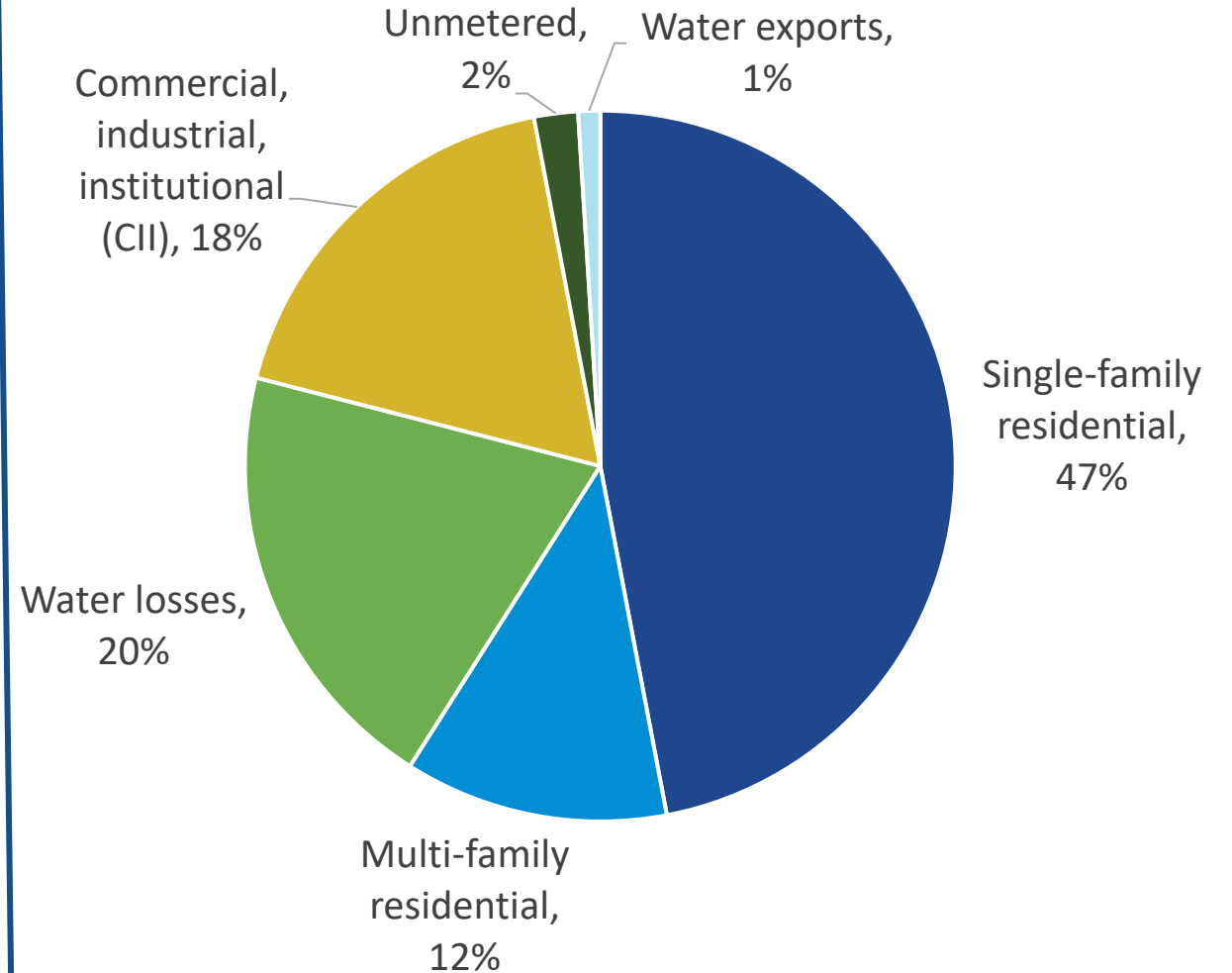


Municipal PWS sector serves both residential and non-residential water users

Share of water use across the municipal PWS sector is unknown; plan assumes national averages

Amy Vickers and Mary Ann Dickensen, "Introduction to water conservation program planning," Webinar from the Alliance for Water Efficiency, September 17, 2020.

Public water supply system water uses, national averages



Website overview



[LEARN MORE](#)

[RESIDENTS](#)

[COMMUNITIES](#)

Become more water efficient

Learn more about water conservation and apply for water conservation assistance

[GET STARTED](#)



conserwaterforkane.org





Conserve Water For
KANE

LEARN MORE

RESIDENTS

COMMUNITIES

Background

Assistance

Resources

Calculators

Workshops & Events

About

Frequently Asked Questions

Start here to explore what you can conserve water

Kane County faces a growing challenge in ensuring sustainable water supply as its population and water demand increase. ConserveKane addresses this by offering education, assistance, and resources to promote water conservation to both residents and water suppliers.

RESIDENTS

WATER SUPPLIER



Conserve Water For
KANE

[LEARN MORE](#) > ASSISTANCE

Need help? Get the assistance you need to get started

Conserving Kane County's limited water supply is a shared responsibility. Everyone in Kane relies on the same water sources to meet their water needs. Whether you are a resident or a water supplier, our assistance programs support the implementation of water conservation actions.

Get Started



Residential

As a Kane County resident, you can take advantage of toilet rebates, free workshops, and educational resources.

- [APPLY FOR A TOILET REBATE](#)
- [ATTEND A WORKSHOP](#)
- [DISCOVER TIPS & HOW-TO-GUIDES](#)



Water Supplier

Our water supplier program provides technical assistance. We also encourage you to explore case studies and other resources.

- [APPLY FOR ASSISTANCE](#)
- [LEARN FROM OTHER WATER SUPPLIERS](#)
- [GET RECOGNIZED - WATER SAVER AWARD](#)

[LEARN MORE](#) > RESOURCES

Dive into our resources that support your water conservation efforts

Explore a reservoir of information, tools, and guides to help you make informed decisions about water conservation. Whether you're looking for fact sheets, how-to videos, or case studies, this section is your gateway to learning more about sustainable water practices.



Residents

Access factsheets and guides to help you make informed decisions about water conservation in your home.

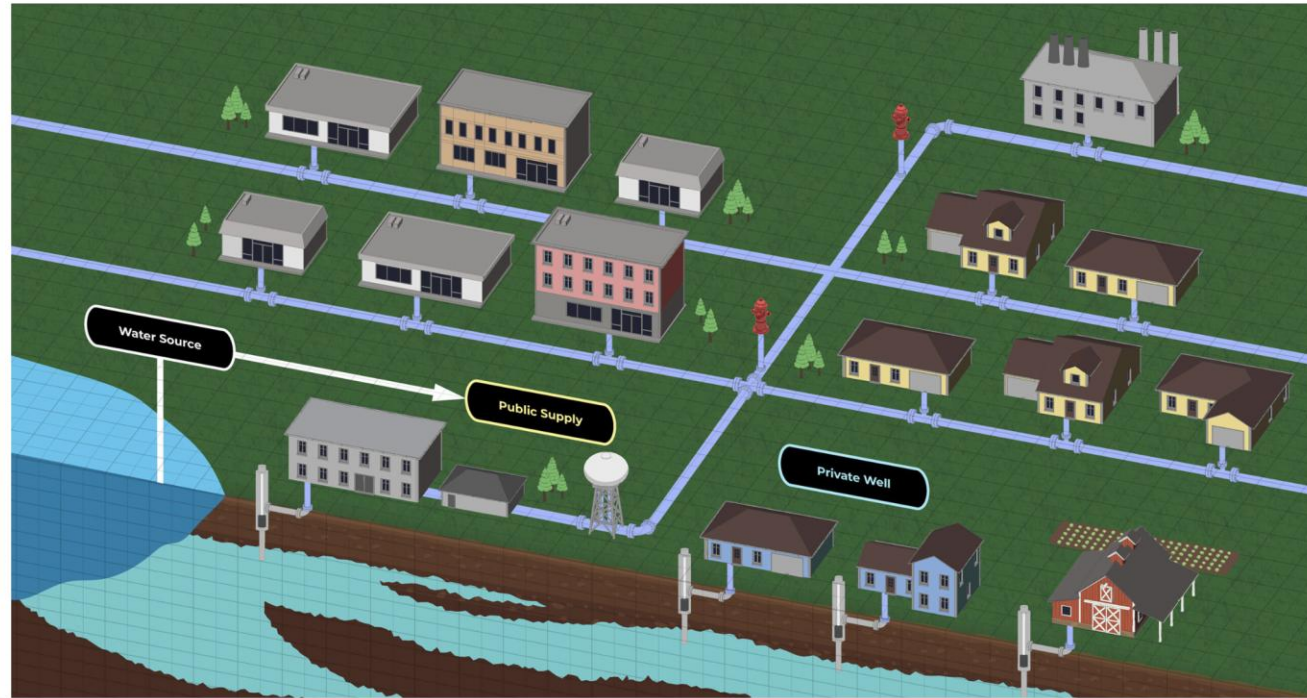
[RESOURCES FOR RESIDENTS](#)



Water Suppliers

Explore free water conservation resources for water suppliers and communities.

[RESOURCES FOR COMMUNITIES](#)



Water Use Calculators

Estimate your water use and savings opportunities with our interactive calculators!

[RESIDENTIAL CALCULATOR](#)

[WATER SUPPLIER CALCULATOR](#)

Q Search for events

FIND EVENTS

List

Month

Day



Today

Upcoming

March 2025

TUE
25

March 25 @ 10:00 am - 12:00 pm

Northwest Water Planning Alliance Technical Advisory Committee Monthly Meeting

Zoom Meeting , United States

Meetings will be via Zoom unless otherwise noted. Advanced registration is required. Meetings are open to the public and all NWPA...



< PREVIOUS EVENTS

NEXT EVENTS >



SUBSCRIBE TO CALENDAR

Residents and Communities

Workshops

Toilet Rebate

Resources

Household Calculator

Your hub for efficient water use at home!

Here, you'll find tools to take water conservation actions in your home. Whether you are interested in taking a workshop, applying to our toilet rebate program, accessing educational resources, or using our residential water use calculator, this is your gateway to practical, impactful water-saving solutions.

Calculate Your Water Use

<https://conserwaterforkane.org/dev/residents/>

Attend a Workshop



Kane needs demand reductions in their municipal public water supply systems (CMAP, 2024)

Residential participation is essential for a sustainable public supply

We offer residents ways to learn about and be more water sustainable:

- Toilet rebate program
- Water use calculator
- Educational resources and guides
- In-person workshops

Participation = reduced stress on our shared groundwater resources!

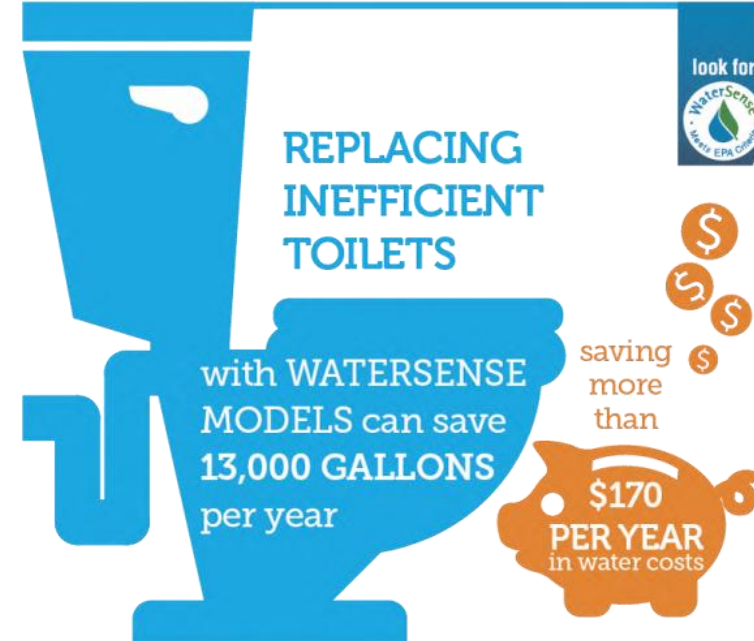


Source:
(EPA, 2025)









Toilet Rebate Program

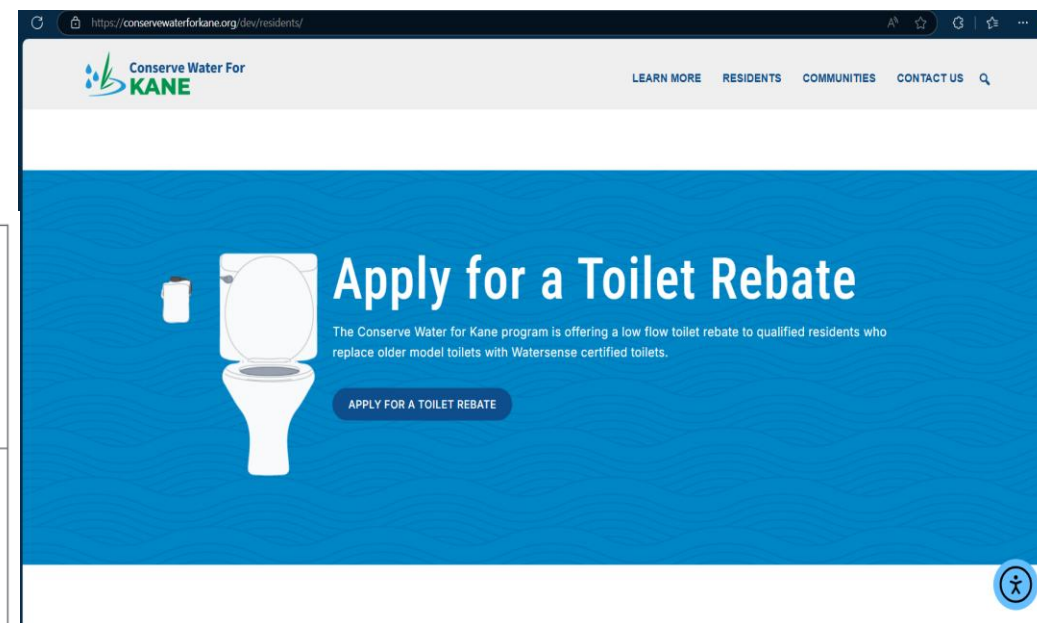
Low-flow, WaterSense certified toilets use 1.28 gallons per flush (gpf) (EPA, 2025)

- 20% less than the current federal standard of 1.6 gpf
- significantly less than older model toilets which can use up to 6 gpf
- incentivize residents to upgrade a significant water use device



Source: (Residential End Uses of Water Study V2, 2016)

							
Toilet 24% 33.1 gphd	Shower 20% 28.1 gphd	Faucet 19% 26.3 gphd	Clothes washer 17% 22.7 gphd	Leak 12% 17.0 gphd	Other* 4% 5.3 gphd	Bath 3% 3.6 gphd	Dishwasher 1% 1.6 gphd



Educational and How-to resources

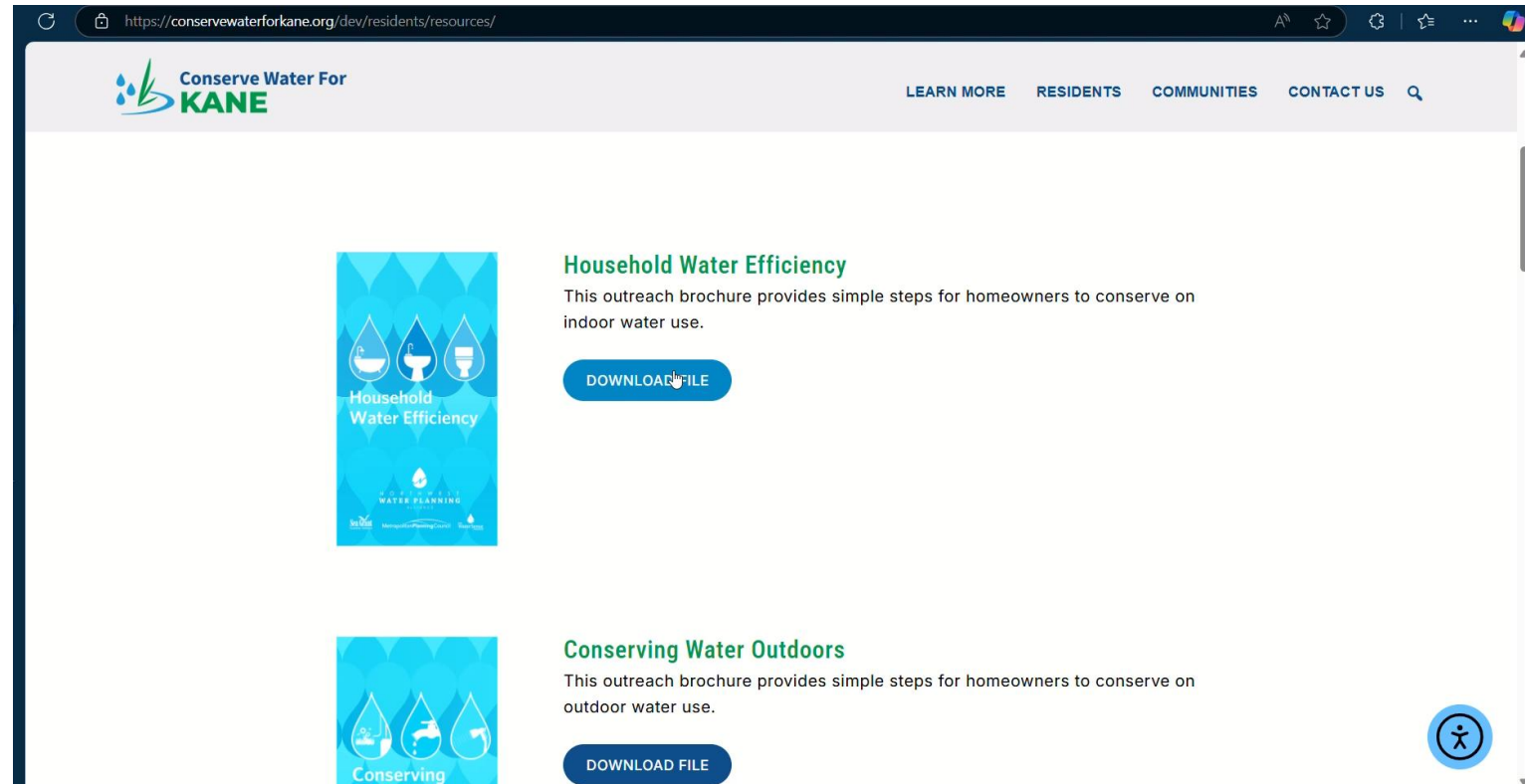
We aim to provide a rich library of resources, guides, and videos for residents to learn from and use to become more water efficient!

Offerings include collaborative resources from partners:

- NWPA
- CMAP
- IISG/IL Extension

and more from:

- ISAWWA
- EPA WaterSense
- Illinois State Water Survey



Water Use Calculator

Our water use calculator is an **easy to use tool** for residents to get a **general idea** which areas of their household could be more **water efficient**.

The tool asks users key details related to their water use habits and devices at home.

Key water use areas:

- Bathroom
- Kitchen
- Laundry Room
- Outdoor (garden)



Their responses inform the calculations made. The calculations consider data, averages, or specifications from

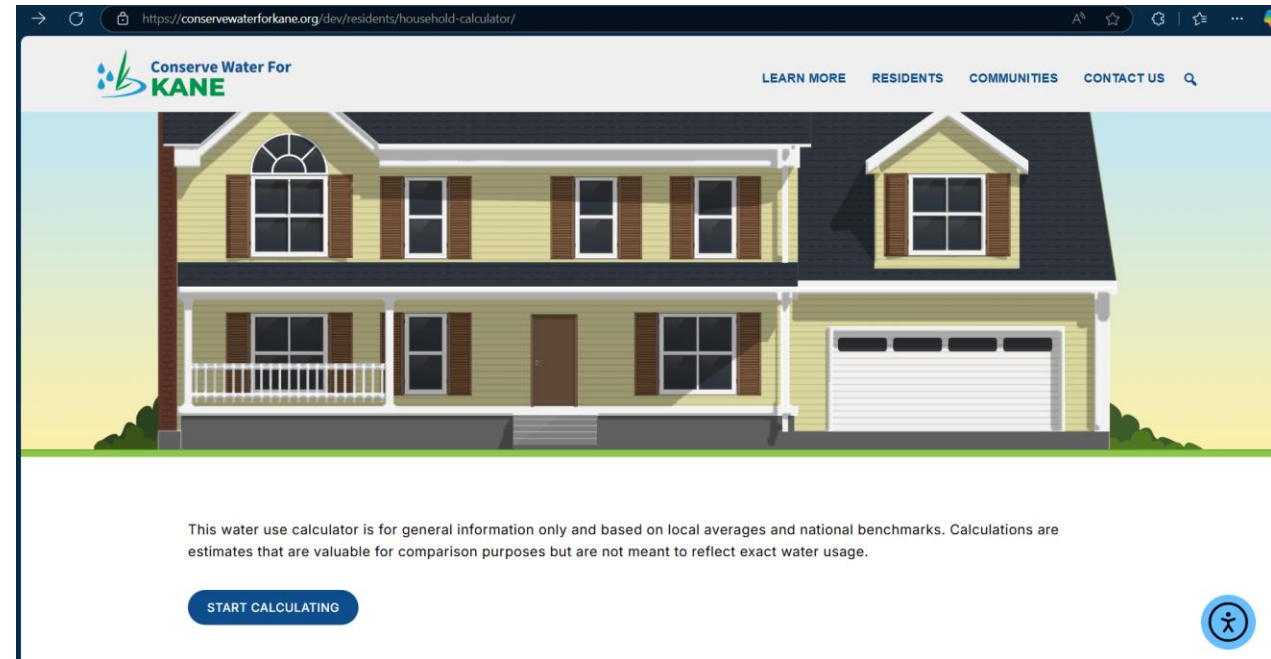
- Flume Water averages
- Federal standards
- EPA WaterSense specifications
- EnergyStar device specifications
- Device market penetration data
- Device replacement cycle data



Scenario 1

To showcase how the calculator works, we will walkthrough two unique scenarios on the current website build:

- own a single-family household in Kane County, Illinois.
- don't know when your home was built
- have old sinks that are dated before 2003
- paid top dollar to not think about dishes
- a clothes washer your grandparent gave you from their old storage cabin
- A significant other who is a master gardener and takes pride in their landscape practices
- 3 kids!



Scenario 2

- own a single-family household in Kane County, Illinois.
- newly built home, post-2006
- significant other is a plumber, likes to reduce leaks with the newest devices in the bathroom
- dishwasher was last replaced within the last decade
- an average clothes washer from the department store
- “I love to garden but I leave my sprinklers on all the time for my dogs!”
- 2 adults

Workshop Series and Curriculum

In-person workshop series tied to our residential program is in development and planning. These **2-hour workshops** will include **short presentations, activities, and resources** for residents to take home! The series will also be used to pilot and develop a **dedicated curriculum for residents** that covers all workshop topics!



June 14, 2025

Understanding Water in Kane County

Explore Kane County's water sources and supply.



July 17, 2025

WaterSense, EnergyStar and Device Retrofits

Understand the benefits of WaterSense-labeled products and high-efficiency devices.



August 9, 2025

Indoor Water Use

Learn how to reduce water consumption in your home via device retrofits and behavioral changes.



Sep. 13, 2025

Outdoor Water Use

Discover strategies to optimize water use in landscaping, gardening, and other outdoor activities.



Oct. 11, 2025

Water Use Habits and Behavioral Changes

Explore how daily habits and small behavioral changes can save water.



Nov. 8, 2025

Building a Sustainable Water Future

Create action plans for water conservation at home and in the community.

Communities are key to securing Kane's water future

Our program aims to support communities and water suppliers within Kane County to take proactive steps towards water efficiency practices.

Next steps/get involved

- Goal is to launch in tandem with WSSP plan adoption
- Interested in reviewing the site and providing feedback? Let us know
- A community water supplier? Apply for assistance implementing the WSSP plan.
- Partner with us on workshops
 - Attend a pilot workshop and help provide feedback
 - Host a booth/display resources at a workshop
 - Be a speaker
- Help us promote the website once launched
- Share your ideas

Thank you!!

Margaret Schneemann

mschneemann@cmap.illinois.gov

Haider Mehdi

hmehdi@cmap.illinois.gov

*Illinois Indiana Sea Grant & University of Illinois
Extension*

Funding Acknowledgment

Conserve Water for Kane was funded by Kane County through the American Rescue Plan Act (ARPA) to support water conservation education efforts. We appreciate Jodie Wollnik and the County's commitment to sustainable water management and community education.