

ON TO 2050

# Water Resources

Draft Strategy Paper  
April 25, 2017

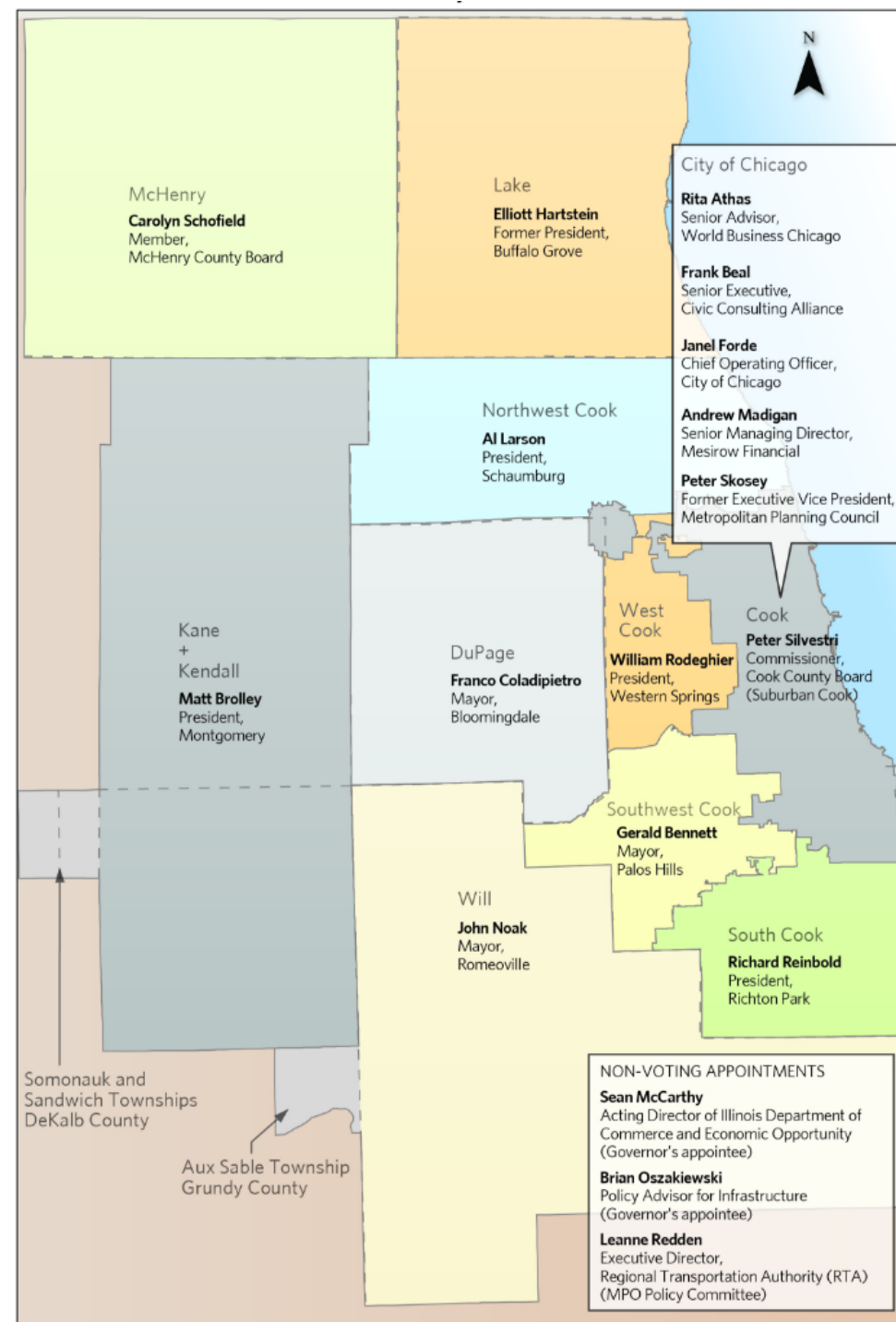
# Agenda

- Goal for today's presentation
- CMAP, ON TO 2050, and purpose of paper
- Draft outline
- Discuss water supply related strategies
- Next steps



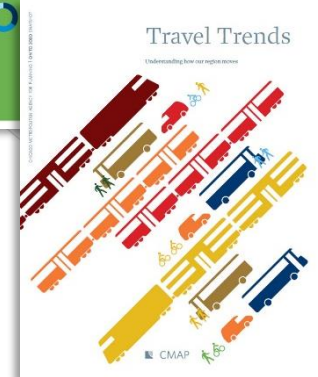
# Chicago Metropolitan Agency for Planning (CMAP)

- Official regional planning organization and MPO for northeastern Illinois
- Goal to integrate planning for land use and transportation
- Programs include:
  - Local Technical Assistance
  - Regional Transportation Programming
  - Research and Analysis



Metropolitan Chicago's Next Comprehensive

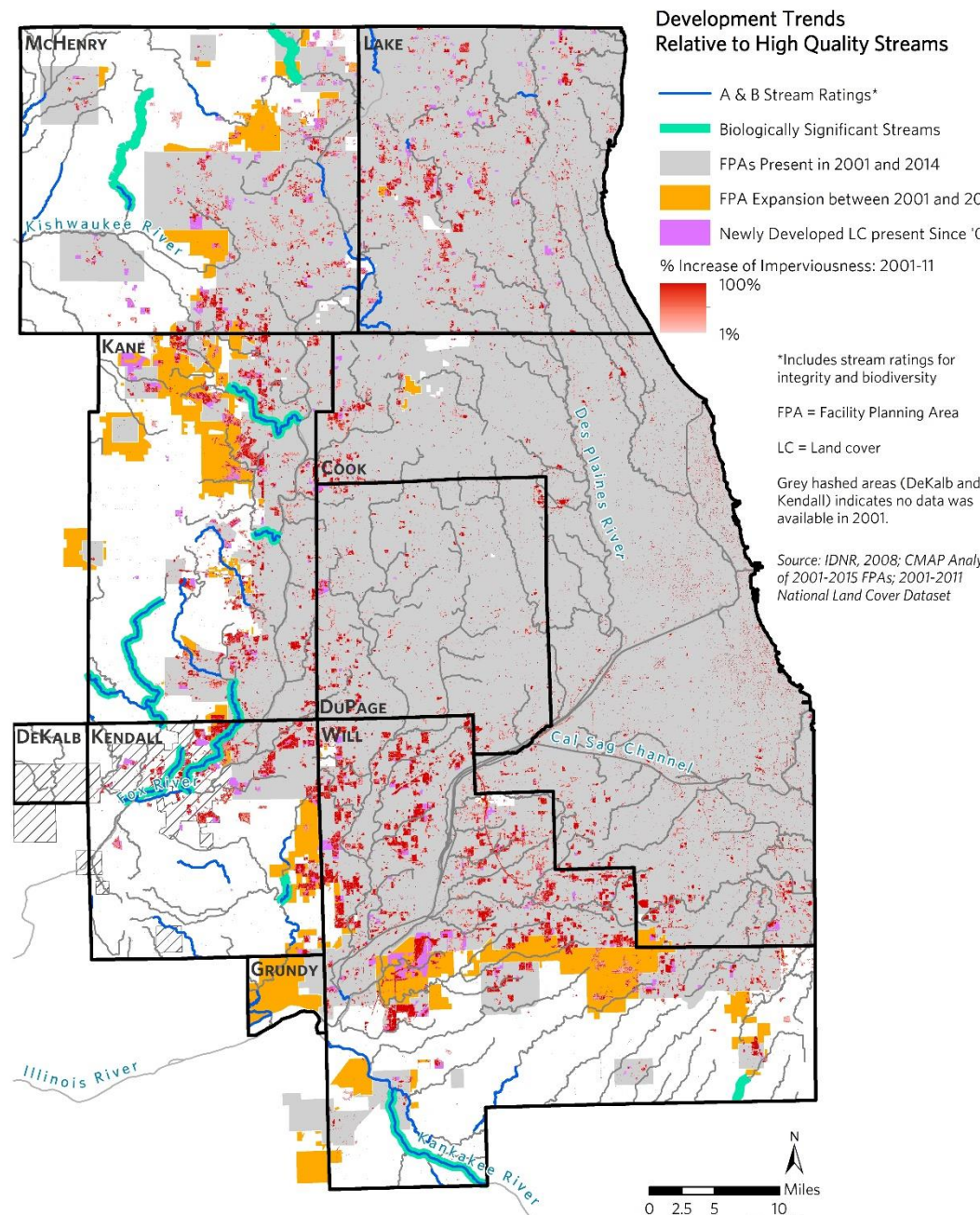
ON TO 2050



# Water Strategy Paper

## Purpose

- Identify potential refinements to water supply and quality recommendations.
- Build on current work and previous plans – GO TO 2040 and Water 2050.
- Led by Jason Navota at CMAP.



# Draft outline

1. Introduction
2. Current management of water resources
3. Issues and challenges
4. Policy framework
  1. Improve state and regional coordination
  2. Enhance land use planning to minimize development impacts on water resources
  3. Coordinate regional water withdrawals
  4. Expand investment in infrastructure and facilities
  5. Prevent continued degradation of water quality



# Discuss water supply related strategies

Encourage regional and sub-regional coordination on water supply issues

Improve regional information on water supply

Incorporate water supply and demand forecasts into local and regional planning decisions

Better integrate groundwater recharge protection into planning

Support coordination between existing and future Fox and Kankakee River users

Strengthen groundwater monitoring and withdrawal system

Utilize open space protection for water supply and quality goals

Strategically manage Lake Michigan allocation

Encourage water demand management strategies

Expand utilization of State Revolving loan funds to upgrade and rehabilitate existing system

Reduce water loss through asset management

Encourage full cost pricing with affordable access

Explore shared services



# Discuss water supply related strategies

**Encourage regional and sub-regional coordination on water supply issues**

**Improve regional information on water supply**

**Incorporate water supply and demand forecasts into local and regional planning decisions**

**Better integrate groundwater recharge protection into planning**

**Support coordination between existing and future Fox and Kankakee River users**

**Strengthen groundwater monitoring and withdrawal system**

Utilize open space protection for water supply and quality goals

Strategically manage Lake Michigan allocation

Encourage water demand management strategies

Expand utilization of State Revolving loan funds to upgrade and rehabilitate existing system

Reduce water loss through asset management

Encourage full cost pricing with affordable access



Explore shared services



# Discussion

- With limited funding, are we capturing the priority activities?
- Are these goals forward thinking enough? Do they represent where we want to be by 2050?
- Who are the critical partners?
- What steps are missing?



# Encourage regional and sub-regional coordination on water supply issues

Support and expand sub-regional water planning groups to coordinate efforts among users of shared resources.

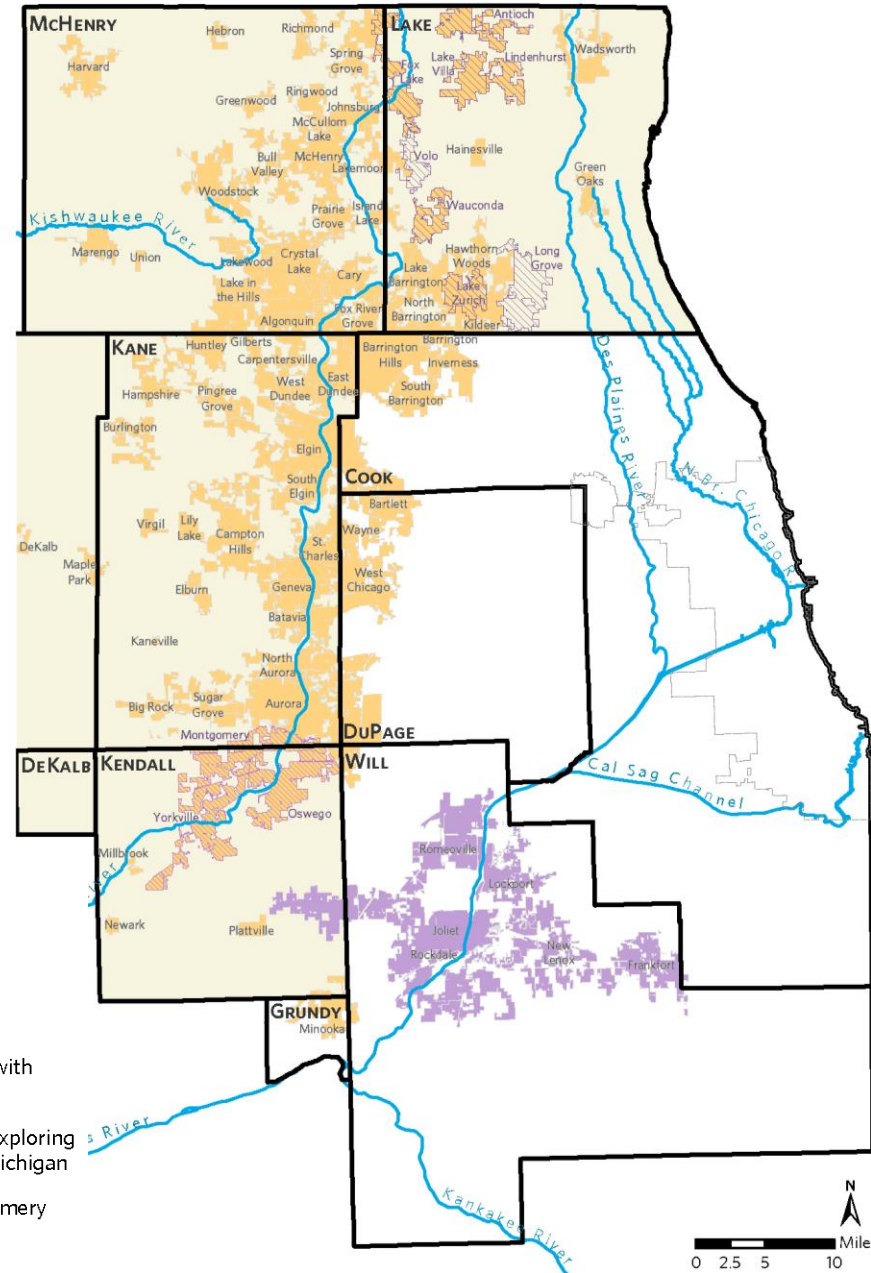
Reinstate regional water supply forum to coordinate at regional scale.

Support coordination with water quality and wastewater decision-makers.

## Existing Coordination Areas

- Source Protection
- NWPA member cities
  - NWPA member counties

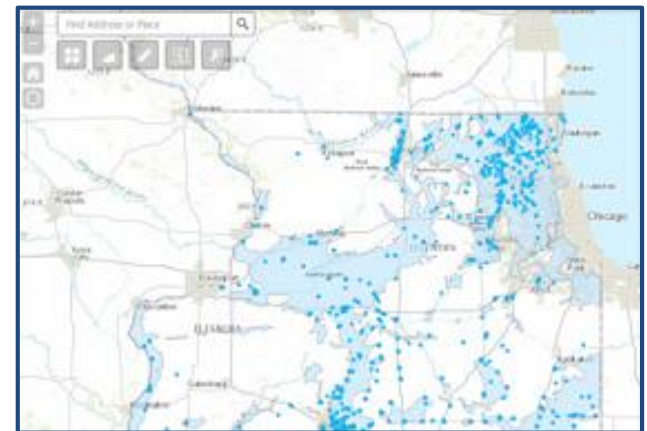
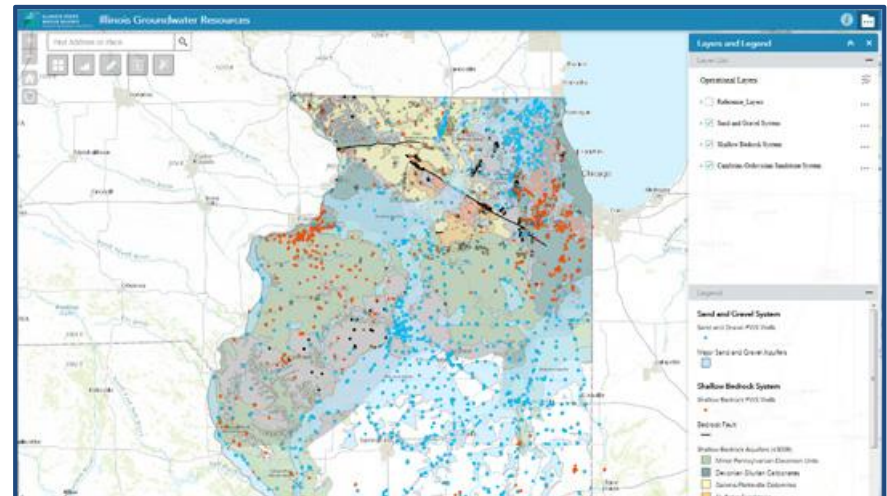
- Alternative source coordination
- Lake County communities with Lake Michigan Allocation
  - Will County communities exploring Kankakee River and Lake Michigan
  - Oswego, Yorkville, Montgomery exploring Fox River



# Improve regional information on water supply

- Modernize data collection of water withdrawals
- Enhance understanding of groundwater availability and quality
- Enhance understanding of river water availability and quality
- Study impacts of urbanization, climate change, and withdrawals on water resources

ISWS Groundwater Resources Interactive Map



# Incorporate water supply and demand forecasts into local and regional planning decisions

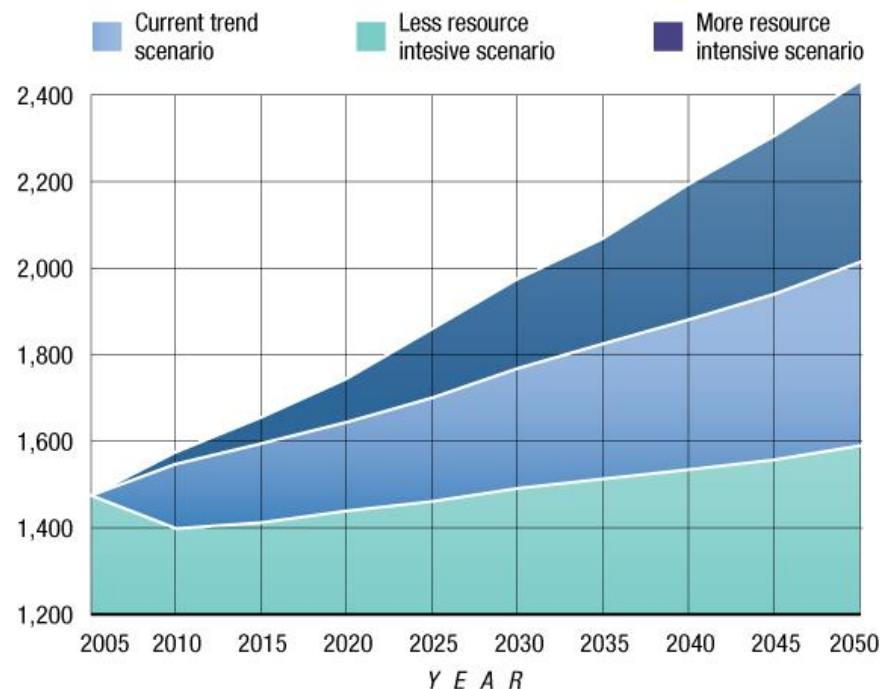
Update the regional water supply/demand forecast.

Provide data for local water supply/demand forecasts.

Encourage land use strategies that reduce water demand

## Water 2050 Water Demand Scenarios

Scenario water withdrawals: 2005 - 2050,  
in million gallons per day



Source: B. Dziegielewski and F.J. Chowdhury, 2008, Southern Illinois University Carbondale



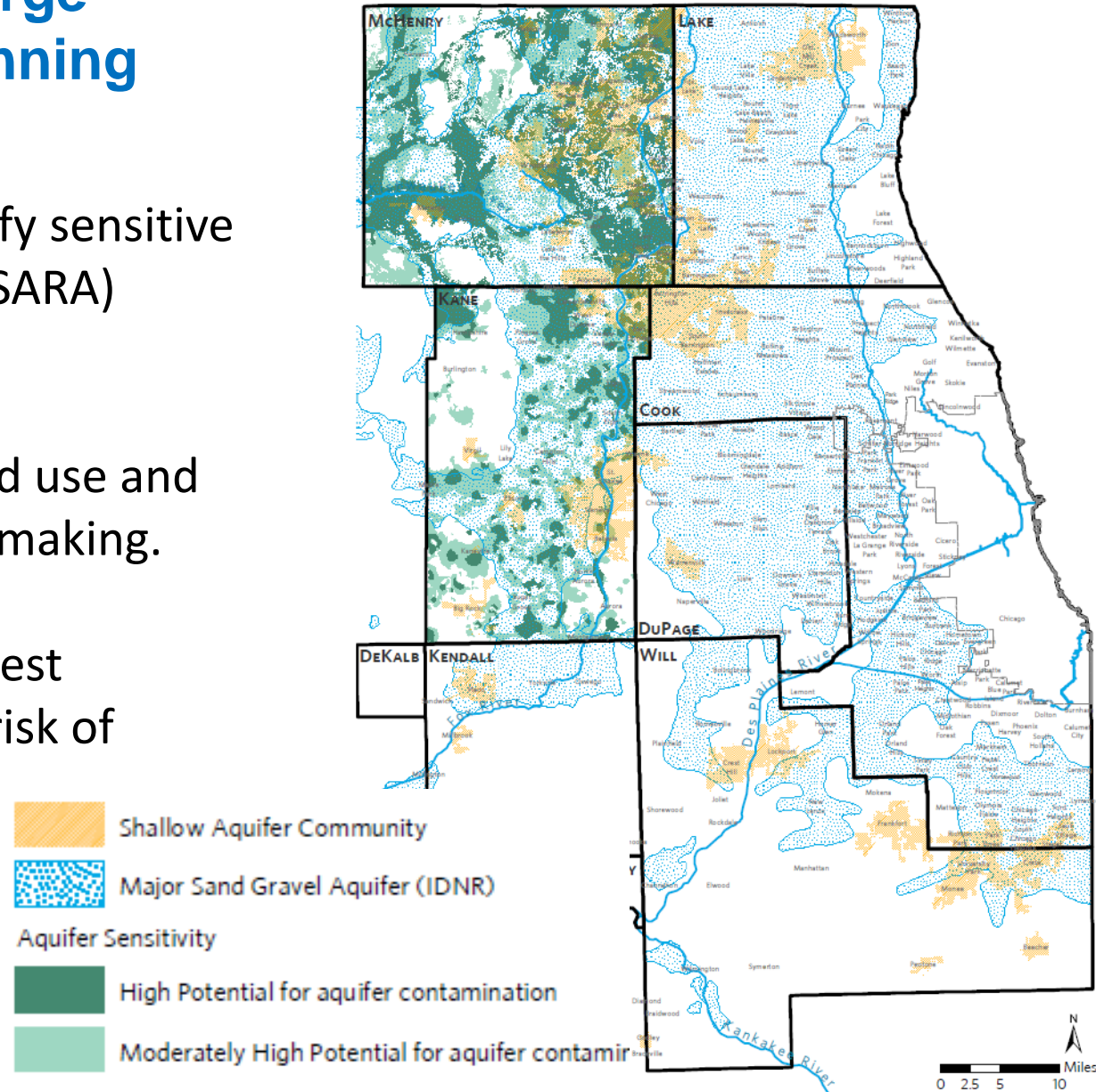
# Better integrate groundwater recharge protection into planning

Support efforts to identify sensitive aquifer recharge areas (SARA) throughout the region.

Integrate SARAs into land use and transportation decision-making.

Promote education on best practices to reduce the risk of contamination.

## Sensitive groundwater recharge areas and shallow aquifer communities

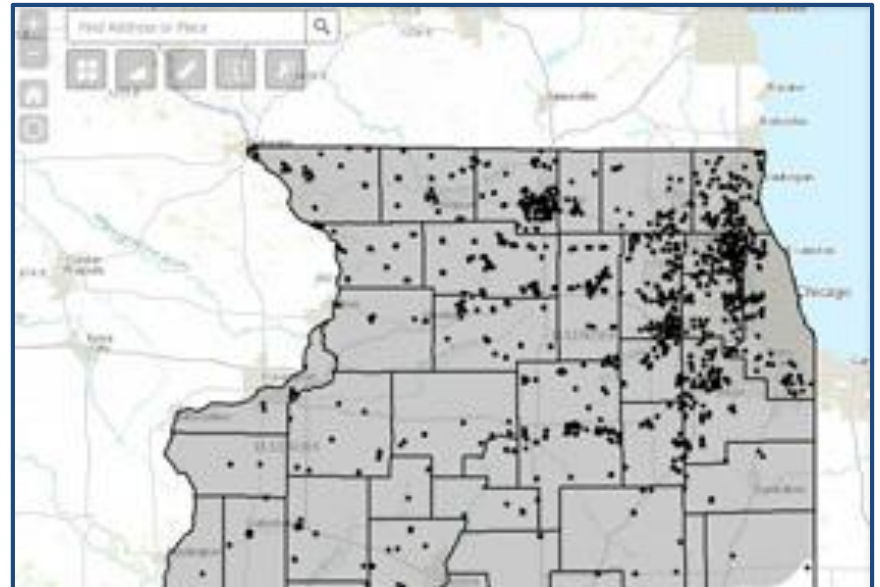




# Strengthen groundwater monitoring and withdrawal system

## ISWS Groundwater Resources Interactive Map

- Maintain and enhance water use reporting system
- Improve water withdrawal review
- Coordinate groundwater withdrawals among users



# Next steps

1. Finalizing draft strategy paper
2. Review by CMAP's Environment and Natural Resources Working Committee – June 1
3. Review by Northwest Water Planning Alliance  
Send June 1, ask for feedback by June 15.
4. Release of the strategy paper





# ON TO 2050

Nora June Beck  
nbeck@cmap.illinois.gov  
312-386-8677