

PRESS RELEASE

July 5, 2012

Sprinkling Ban

Effective July 4, 2012

SPRINKLING BAN

All residents of Lake Forest will receive a hand-delivered message in their mailboxes about the current Sprinkling Ban, effective 7.4.12.

The City is experiencing excessively high water demand due to the drought conditions, and the water filtration plant is at a point where it can no longer meet this demand. Typical water usage for daily use requires approximately 3-4 million gallons of water each day for all of Lake Forest; currently, the City is continuing to pump 12+ million gallons per day. The City has its emergency inter-connects open and is receiving water from the Village of Lake Bluff and is still not able to meet the water demands.

If water storage continues to fall throughout the day and night, the City will experience significant pressure reductions in its water main system.

If this occurs, the City will need to enact a boil order for all potable water (laundry, shower, cooking, drinking, etc.). Please discontinue outside sprinkling systems immediately.

If you have further questions, please contact John Gulledge, Supervisor of Water & Sewer Utilities in the Public Works Department at 847.810.3542. The City of Lake Forest thanks residents for cooperating and helping to conserve water consumption.

Effective immediately, all outside irrigation and lawn sprinkling systems may no longer be used until further notified by the City.



NWPA Technical Advisory Committee's Lawn Watering Conservation Ordinance Proposal

NWPA Executive Committee Meeting
July 12, 2012

Presented by:
Peter G. Wallers, P.E., CFM
NWPA TAC Chairman



43 West Galena Boulevard, Aurora, IL 60506 ~ (630) 859-1331 ~ www.nwpa.us

Why a Lawn Watering Conservation Ordinance?

- Deep aquifer withdrawals are exceeding recharge
- Drought has sharp impacts on shallow aquifers and Fox River
- Lawn watering is a major discretionary use of potable water, and a highly visible one
- Inconsistency between NWPA members on lawn watering policies today – resources often shared!



Outline

- Ordinance development process
- TAC final proposal and survey results
- Recommended ordinance

Recommendation Process

NWPA TAC

NWPA Executive Committee

Councils of Government

NWPA Member Communities

Individual Water Users



Ordinance Development Process

Ordinance review

- Existing ordinances in member communities

Implementation Survey

- Implementation
- Monitoring and enforcement
- Impact measurement

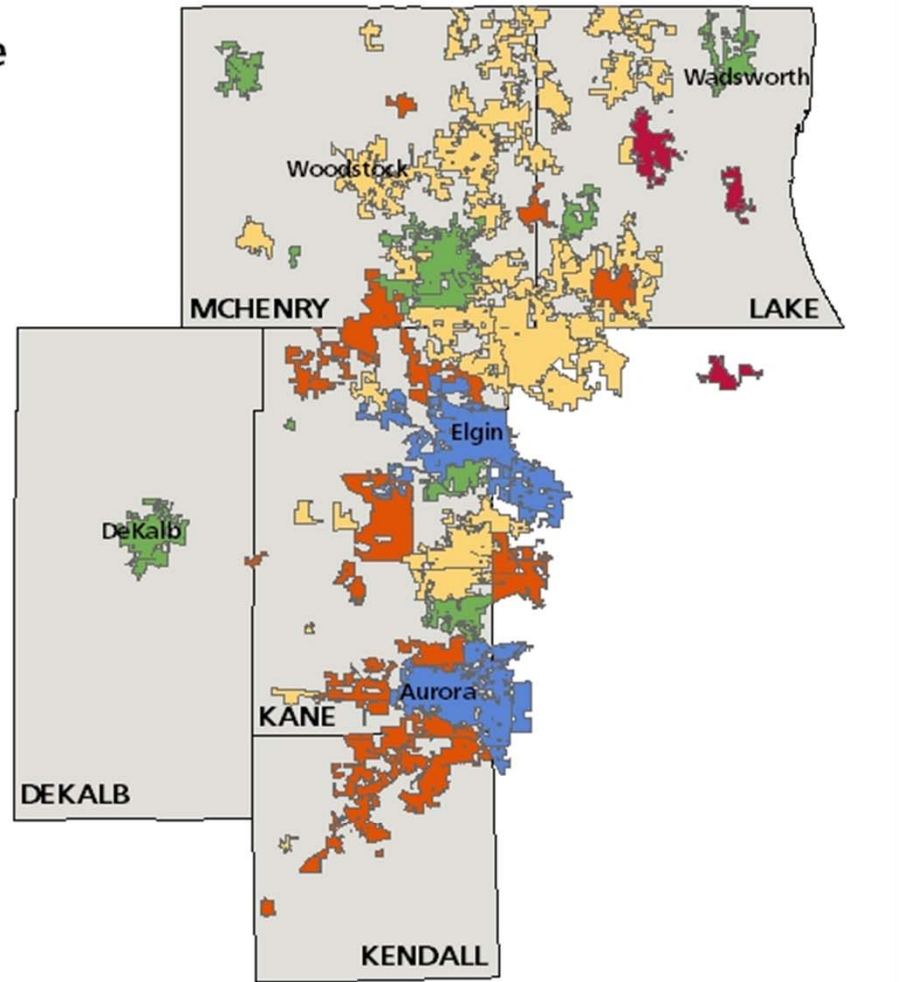
Ordinance assessment

- Strengths and weaknesses
- Best practices in the region
- Scenarios
- Survey

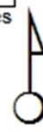
NWPA Communities by Water Source

Water Source

- Deep Aquifer
- Deep Aquifer and River
- Deep and Shallow Aquifer
- Shallow Aquifer
- Lake



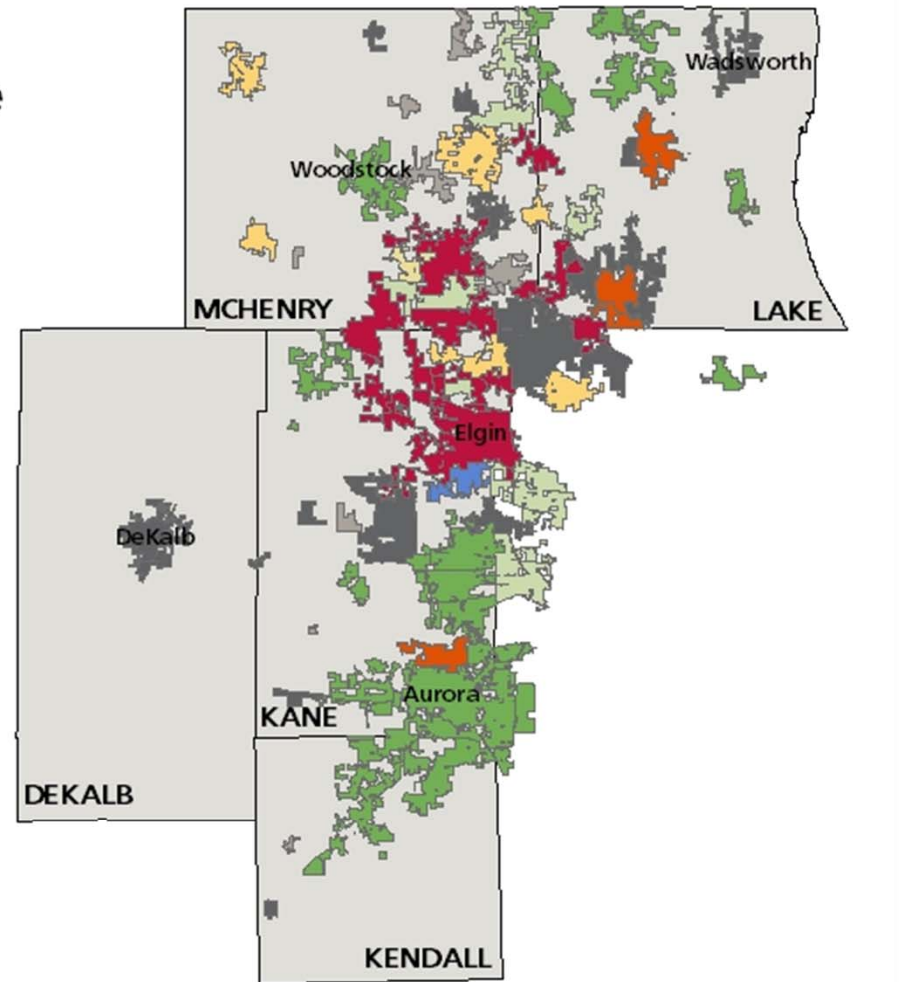
0 5 10 20 30 Miles



NWPA Communities by Lawn Watering Restriction Ordinance Type

Lawn Watering Restriction Type

- Status
- Time
- Even/Odd (Time)
- Even/Odd (Day)
- Even/Odd (Day-Specific)
- Day
- Emergency
- None
- Unknown



0 5 10 20 30 Miles



Type	Description	Example	Communities
Status	Uses colors or levels to change restrictions as needed.	Green: Ban from 9am-6pm, Yellow: Evens go on even days, odds go on odd days, follow time restriction, Red: Prohibited	Algonquin, Barrington, Crystal Lake, East Dundee, Elgin, Fox River Grove, Gilberts, Huntley, Lake Barrington, Lakemoor, Pingree Grove, West Dundee
Time	Restricts watering by time only.	Ban from 10am-5pm	Deer Park, Grayslake, Lake Zurich, North Aurora
Even/Odd (Time)	Restricts watering by both time and even addresses go on even days, odds go on odd days.	Ban from 9am-6pm, evens on even days, odds on odd days	Antioch, Aurora, Batavia, Burlington, Elburn, Fox Lake, Geneva, Green Oaks, Hampshire, Lake Villa, Lindenhurst, Montgomery, Oswego, Prospect Heights, St. Charles, Sugar Grove, Woodstock, Yorkville
Even/Odd (Day)	Restricts watering by day according to even or odd address.	Evens go on even days, odds go on odd days	Bartlett, Johnsburg, Lake in the Hills, Sleepy Hollow, Spring Grove, Wauconda, West Chicago
Even/Odd (Day-Specific)	Restricts watering according to even or odd address, but by specific day of the week.	Evens go on Wednesday, Friday & Sunday, odds go on Tuesday, Thursday & Saturday	Lakewood
Day	Restricts water by day only.	No watering on Mondays. Follows Even/Odd (Day-Specific) during emergencies	South Elgin
Emergency	No regular restriction, but Mayor, Village Board or other entity in power has authority to declare a water emergency and restrict lawn watering as needed.	Mayor can make an emergency proclamation and ban all outdoor water use	Carpentersville, Harvard, Island Lake, Marengo, McHenry, South Barrington
None	No restrictions.	None	Barrington Hills, Big Rock, Campton Hills, DeKalb, Hainesville, Hawthorn Woods, Hebron, Inverness, Kildeer, Maple Park, McCullom Lake, Newark, North Barrington, Prairie Grove, Ringwood, Tower Lakes, Virgil, Wadsworth, Wayne
Unknown	Ordinance not yet found.	Unknown	Bull Valley, Cary, Greenwood, Kaneville, Lily Lake, Millbrook, Richmond, Trout Valley, Union

Survey Results

35 Complete Responses:

Algonquin

Antioch

Aurora (2)

Barrington

Batavia

Crystal Lake (2)

DeKalb

Elburn

Elgin

Geneva

Huntley

Island Lake

Kildeer

McHenry

Montgomery

Newark

North Aurora

Oswego

Pingree Grove

St. Charles

Sugar Grove

Tower Lakes

Union

West Chicago

West Dundee

Woodstock

BACOG

Metro West COG

Kane County

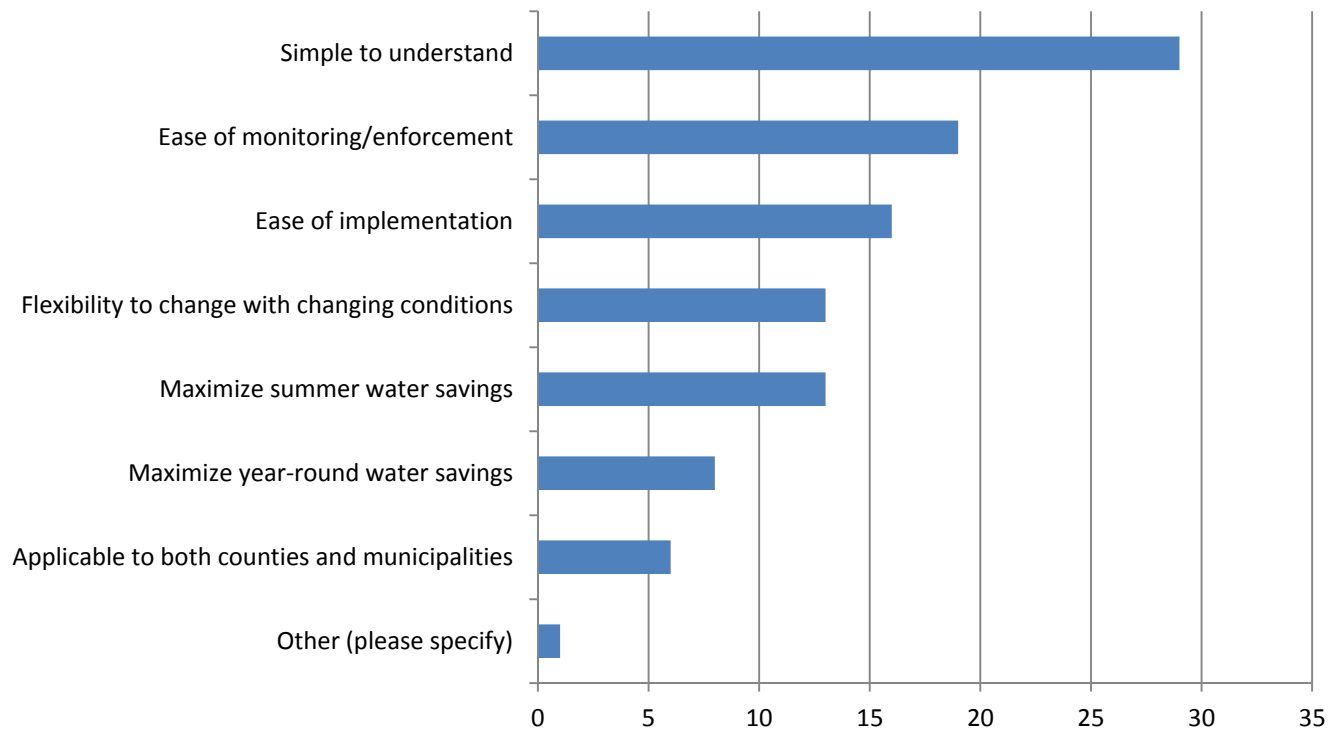
Kendall County

Lake County

CMAP (2)

Survey Results

What should be the main priorities for a shared ordinance? (choose top three)



Survey Results

Given the strengths and weakness [of each type of system], should the proposed ordinance use a color-coded, multi-tier system or a single-tier system?

Multi-Tier, Color-Coded



16

Single-Tier



19



TAC Recommended Conservation Ordinance

Year-round conservation ordinance: 

- Sprinkler use – even addresses on even days/odd on odd, allowed 6am-9am and 6pm-9pm (allows 18 or 24 hours/week)
- Non-potable water and handheld devices allowed any day or time
 - Drip-irrigation, bucket, watering can, hose w/ auto shutoff valve, recycled greywater, recycled effluent, harvested rainwater, kiddie pools



TAC Recommended Conservation Ordinance

- Drought provision: 
 - Sprinkler use prohibited, outdoor use of water allowed with non-potable water or handheld devices
- Extreme drought provision: 
 - Total ban on outdoor watering

TAC Recommended Ordinance

Easy to make a color-coded system if desired (Optional)

- **Green:** Sprinkler use – even addresses on even days/odd on odd, allowed 6am-9am and 6pm-9pm (allows 18 or 24 hours/week), non-potable water and handheld devices allowed any day or time
- **Yellow:** Sprinkler use prohibited, outdoor use of water allowed with non-potable water or handheld devices
- **Red:** Total ban on outdoor watering

Other Ordinance Provisions

1. Water waste restrictions
 - a. Prohibit spraying of impervious surfaces
 - b. Handheld hoses used for car washing must have an automatic shutoff valve
2. Ban on sprinkler use July 31st and August 31st
3. Installation of new sod/seed prohibited in July and August and during any Yellow or Red alert periods. During other times of year, watering of new sod/seed permitted only by: following allowable lawn watering days and times, using reclaimed greywater/recycled effluent/harvested rainwater, or obtaining an extended watering permit
4. Communities with can keep or initiate ordinance provisions that are more conservation-oriented
5. Communities can impose a total outdoor watering ban for water conservation, service interruption, or emergency purposes at any time
6. Specific penalties set by individual communities, recommend fee that increases with the number of violations, portion of fees should be set aside for water conservation education activities



Next Steps

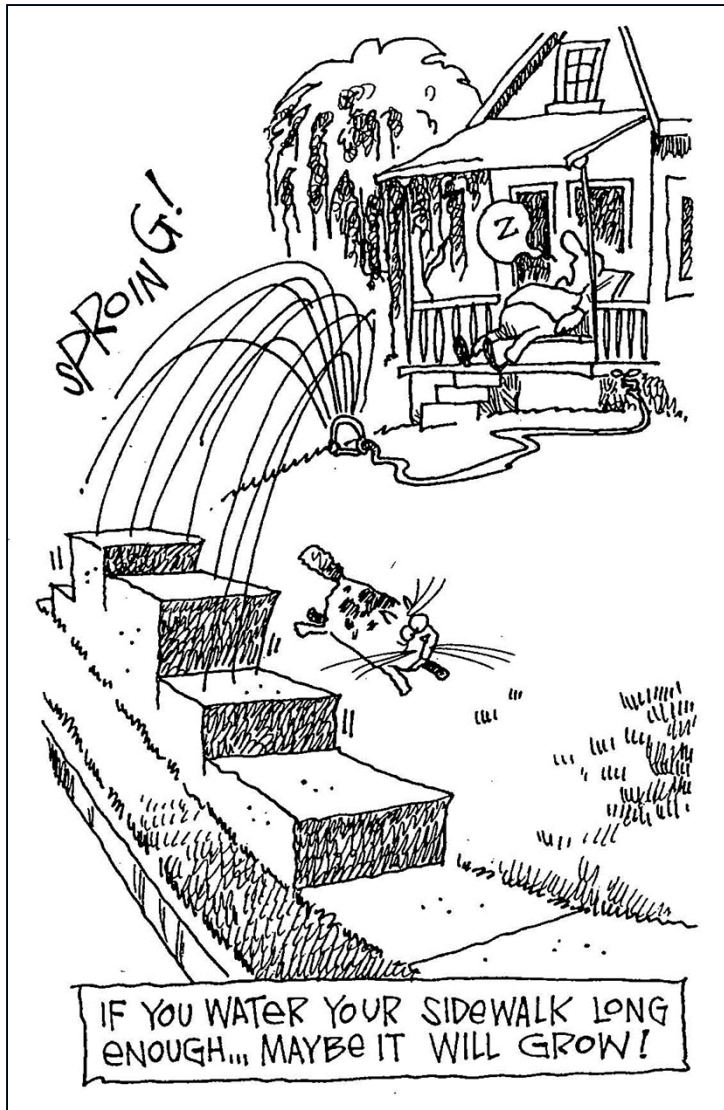
- Feedback and input from the Executive Committee
- TAC will prepare an ordinance for consideration at a future Executive Committee meeting

**Thanks to
Metropolitan Planning Council**

**Josh Ellis
and
Abby Crisostomo**



43 West Galena Boulevard, Aurora, IL 60506 ~ (630) 859-1331 ~ www.nwpa.us



Water Conservation Considerations

Deferred Capacity Increases Due To Water Use Reduction

