

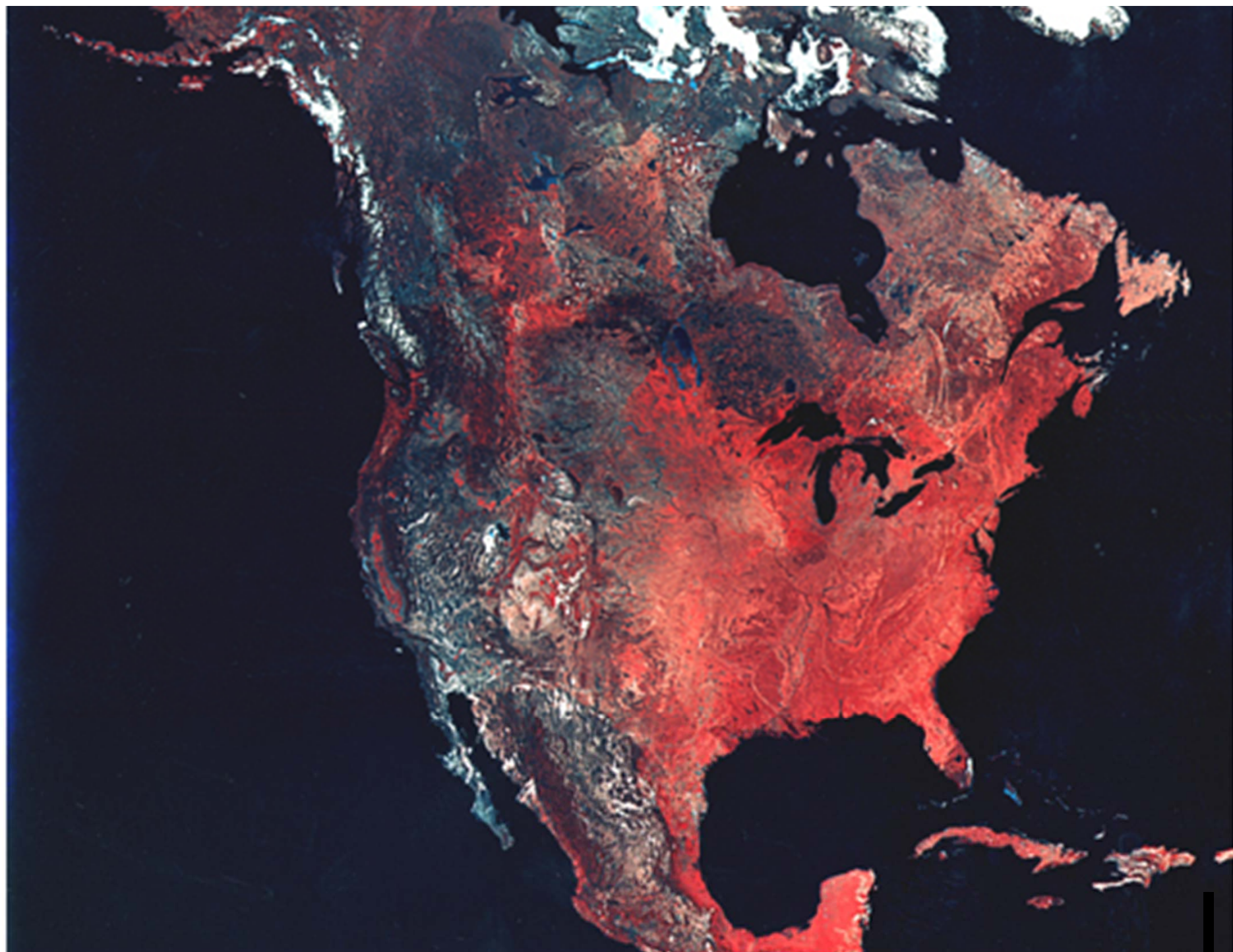


ILLINOIS' LAKE MICHIGAN WATER ALLOCATION/ DIVERSION

Daniel Injerd

Office of Water Resources

Illinois Department of Natural Resources



The Great Lakes Basin





TEXAS

UTAH

CA

NEW MEXICO

**BACK OFF
SUCKERS**

WATER DIVERSION . . . THE LAST STRAW

INFINITY

5541

HECK
MAN

Regional/International Issues

- **June 18, 2001: Eight Great Lakes Governors and the Premiers of Ontario and Québec came together in Niagara Falls.**
- **They approved a Great Lakes Charter**
 - **To update the way Great Lakes Basin water withdrawals will be managed.**
 - **To protect, conserve, restore and improve the Great Lakes water resources for future generations.**



Final Agreements

- **Include:**
 - **A good faith State-Provincial agreement**
 - **A compact for the States**
- **General ban on diversions w/extremely limited exceptions**
- **In-basin withdrawals and consumptive uses reviewed using consistent standards**
- **Require water users to practice conservation**
- **Allow economic development while providing environmental protection**

Final Agreements - continued

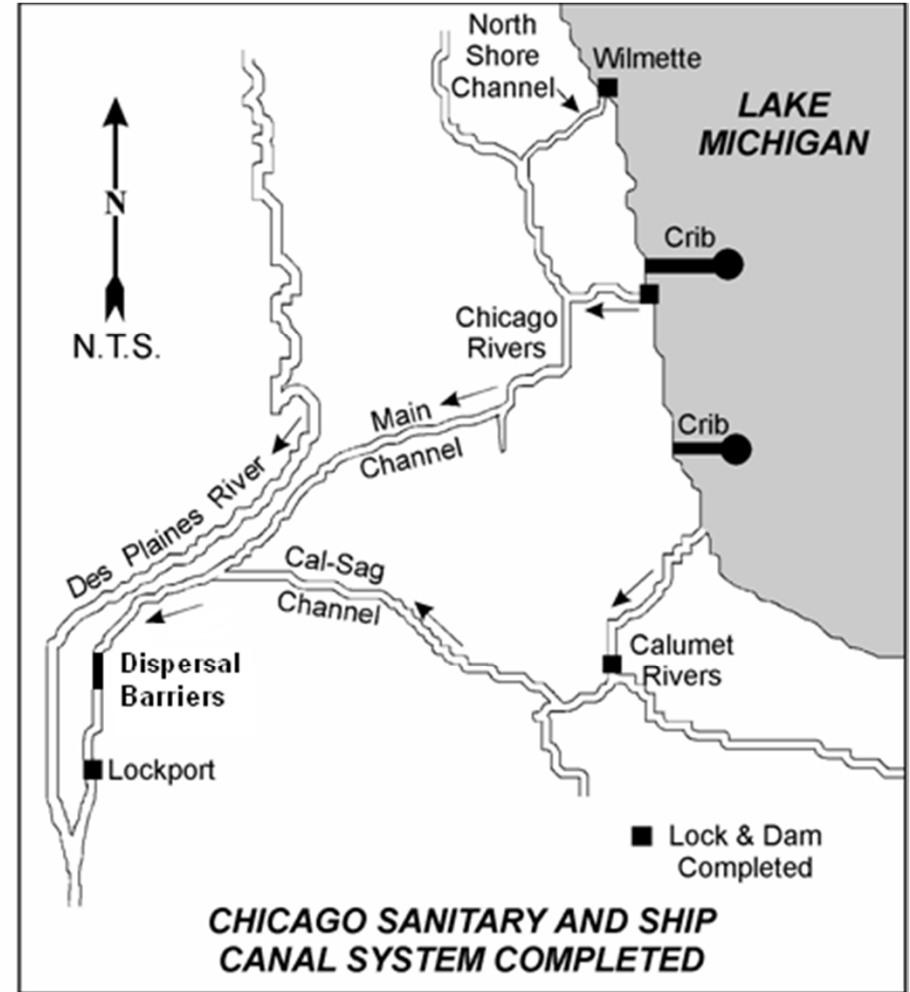
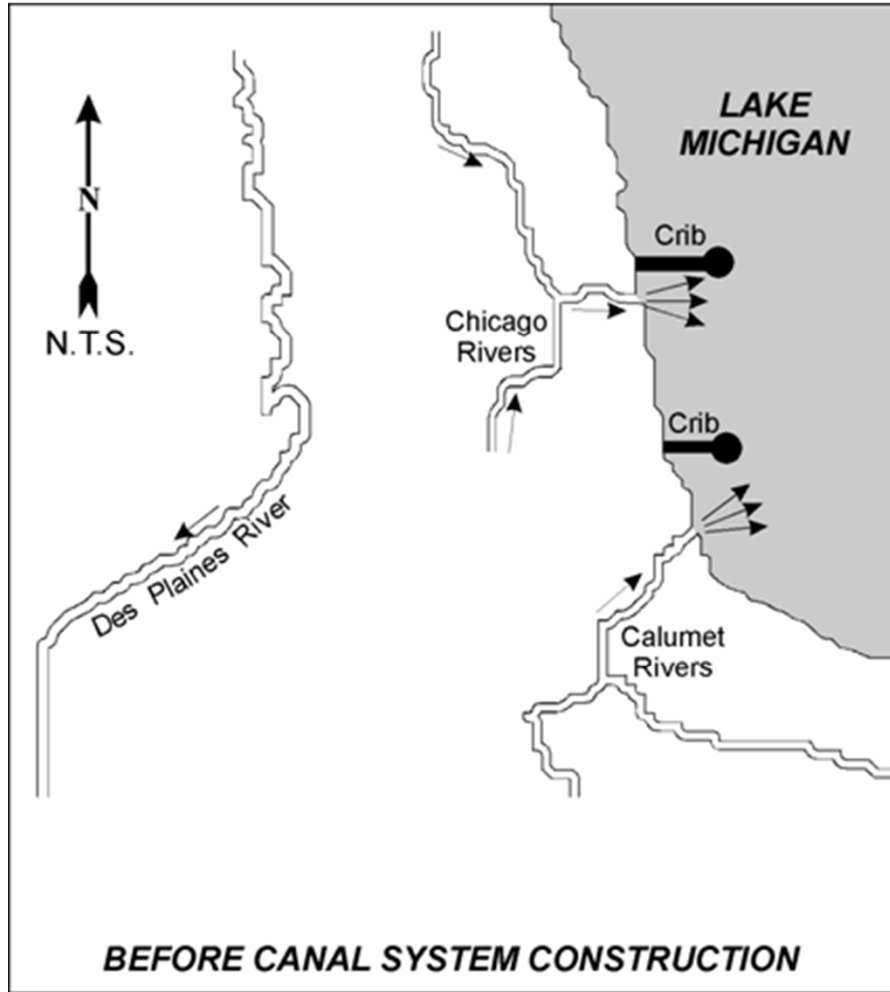
- Commitment to improve collection of water use data
- Illinois' diversion will continue to be governed by the terms of the U.S. Supreme Court Decree, not the Agreements
- The compact became effective on December 8, 2008. It has been ratified by all 8 Great Lakes states legislatures, consented to by Congress and the President.
- For more info – www.cglg.org

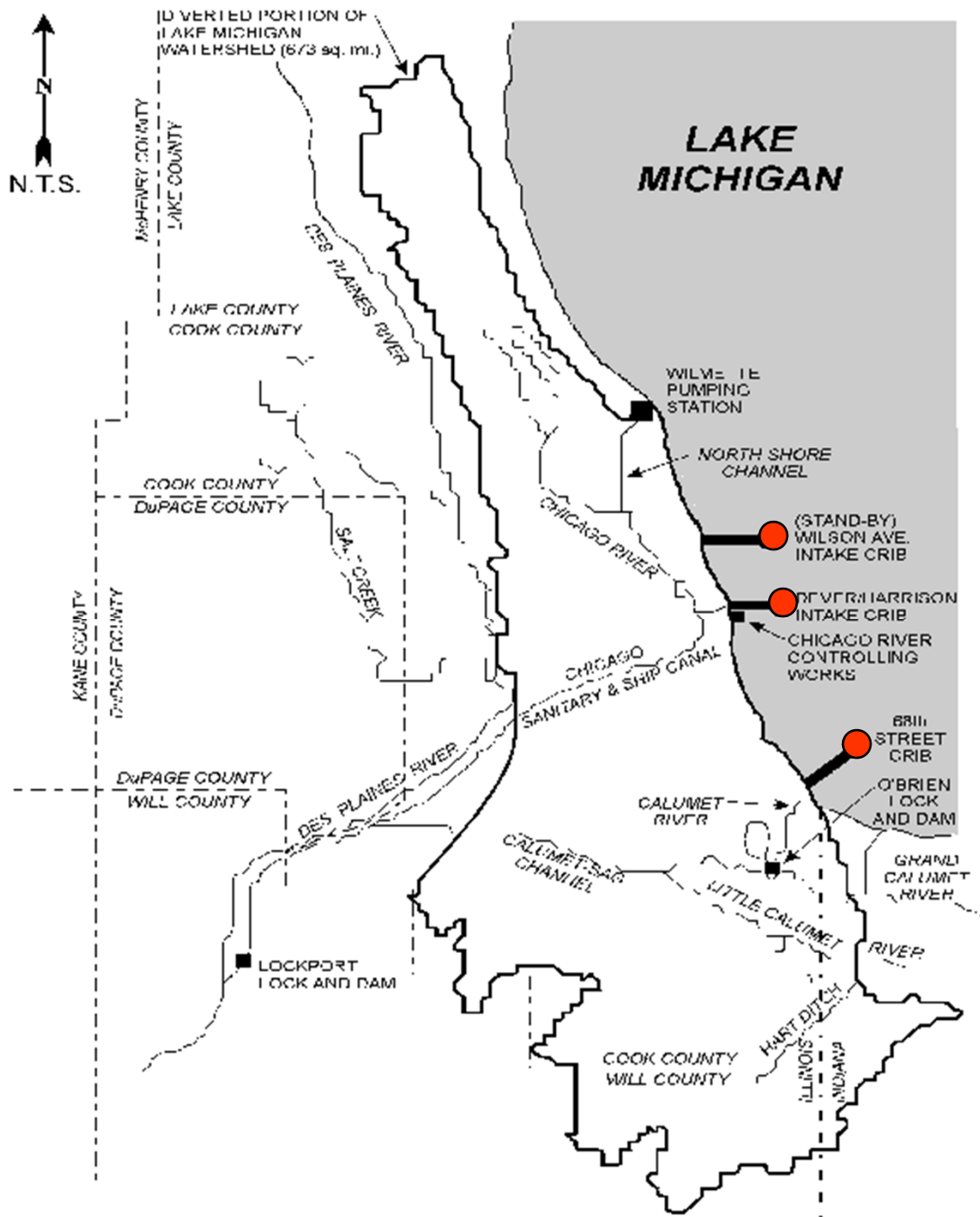
U.S. Supreme Court Decree

- Most recent Decree issued in 1967, amended in 1980.
- Illinois' total diversion must not exceed 3200 cubic feet per second (2.1 billion gallons per day) over a 40 year running average. This amount is fixed.
- Diversion includes domestic use, direct diversion and stormwater runoff.
- Remains controversial.

Level of Lake Michigan Act [615 ILCS 50]

- **Passed in response to the 1967 United States Supreme Court Decree**
- **IDNR given job to allocate Lake Michigan water**
- **Domestic use has priority. Act directs that a goal of the allocation program is to reduce deep aquifer withdrawals**
- **Water supply planning for the Six County N.E. Illinois region**
- **Water Conservation requirements**
- **No Legislative direction to use Lake Michigan water allocation to regulate growth**





Breakdown of Diversion for Water Year 2007

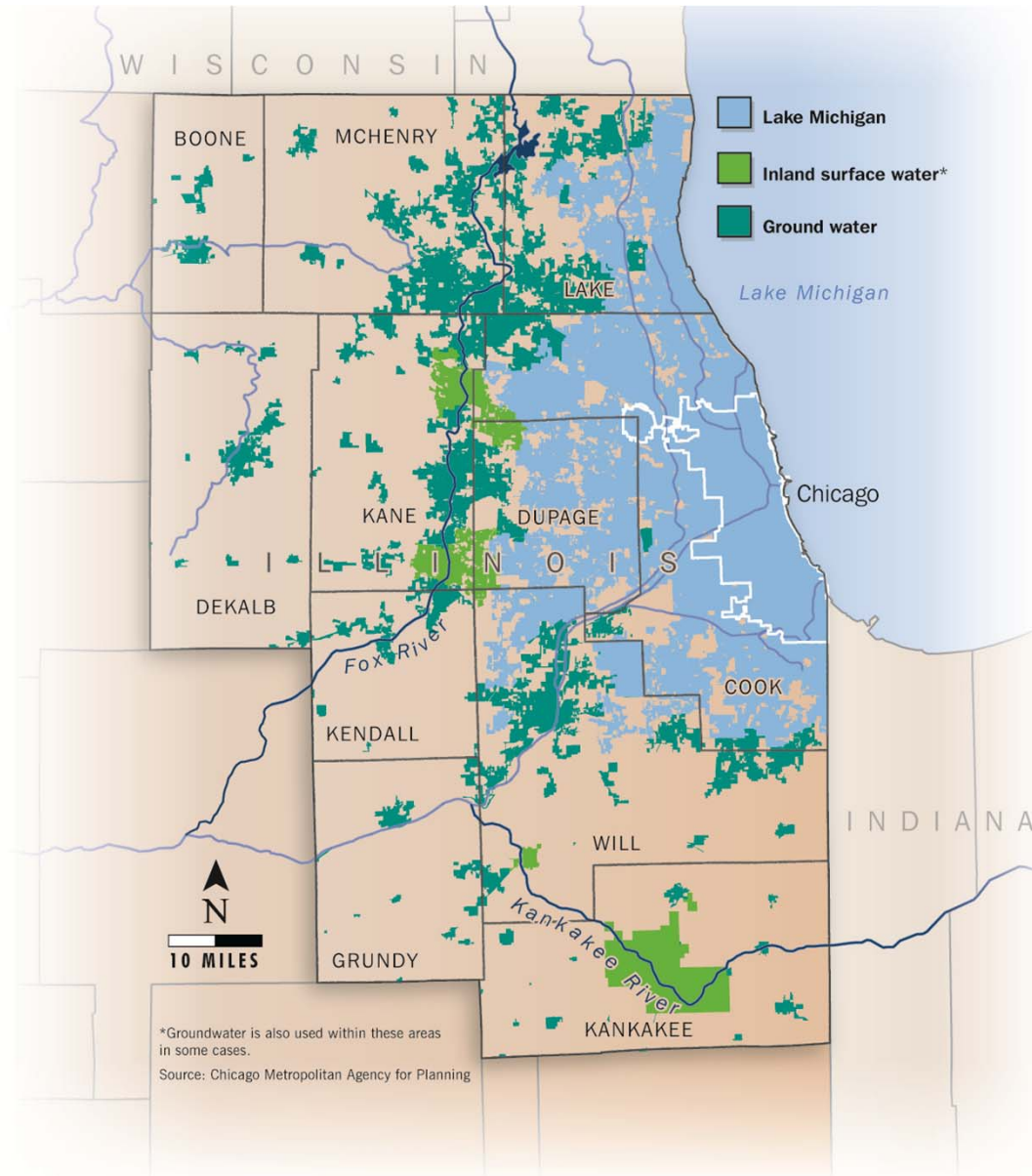


■ Domestic 991
mgd

■ Runoff 772 mgd

■ Direct Diversion
234 mgd

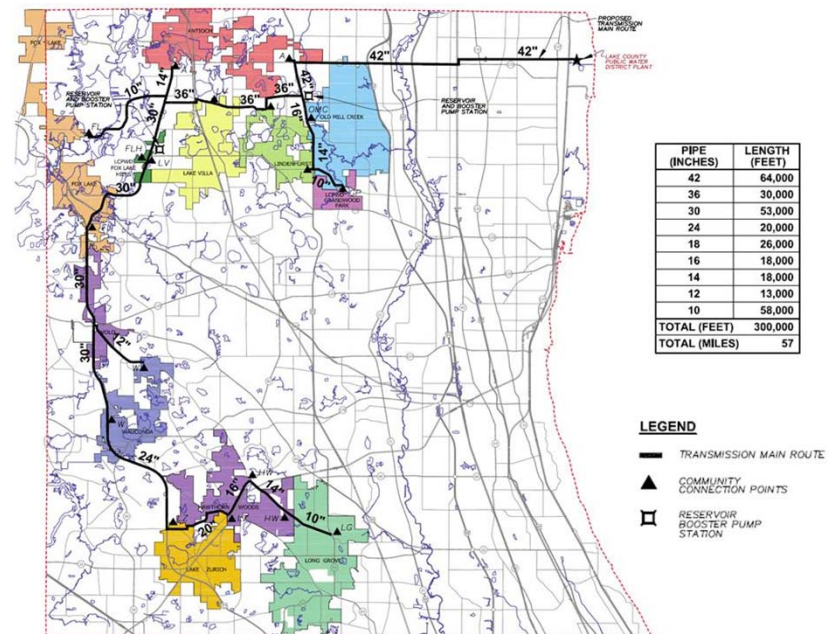
Northeast Illinois Water Sources



Graphic credit: CMAP

LM Water in Western Lake Co.

- 10 communities received alloc in 2011
- Combined demand of 15 mgd in 2030.
- Estimated cost of water infrastructure is \$250 million.



Current Status of Illinois' Diversion

Feb-11

Accounting Year	Certified Flow (cfs)	Running Average (cfs)	Cumulative Deviation (cfs)
1981	3106	3106	94
1982	3087	3097	207
1983	3613	3269	-206
1984	3432	3310	-438
1985	3472	3342	-710
1986	3751	3410	-1261
1987	3774	3462	-1835
1988	3376	3451	-2011
1989	3378	3443	-2189
1990	3531	3452	-2520
1991	3555	3461	-2875
1992	3409	3457	-3084
1993	3841	3487	-3725
1994	3064	3456	-3589
1995	3197	3439	-3586
1996	3108	3418	-3494
1997	3114	3400	-3408
1998	3060	3382	-3268
1999	2909	3357	-2977
2000	2584	3318	-2361
2001	2698	3289	-1859
2002	2919	3272	-1578
2003	2398	3234	-776
2004	2757	3214	-333
2005	2771	3196	96
2006	2628	3174	668
2007	3094	3171	774
2008*	3096	3169	878
2009*	3267	3172	811
2010**	2953	3165	1058

*Estimated, based on final approved USGS Lemont Discharge value

**Estimated, based on provisional USGS Lemont Discharge value

Lake Michigan Water Rates (\$/1000 gallons)

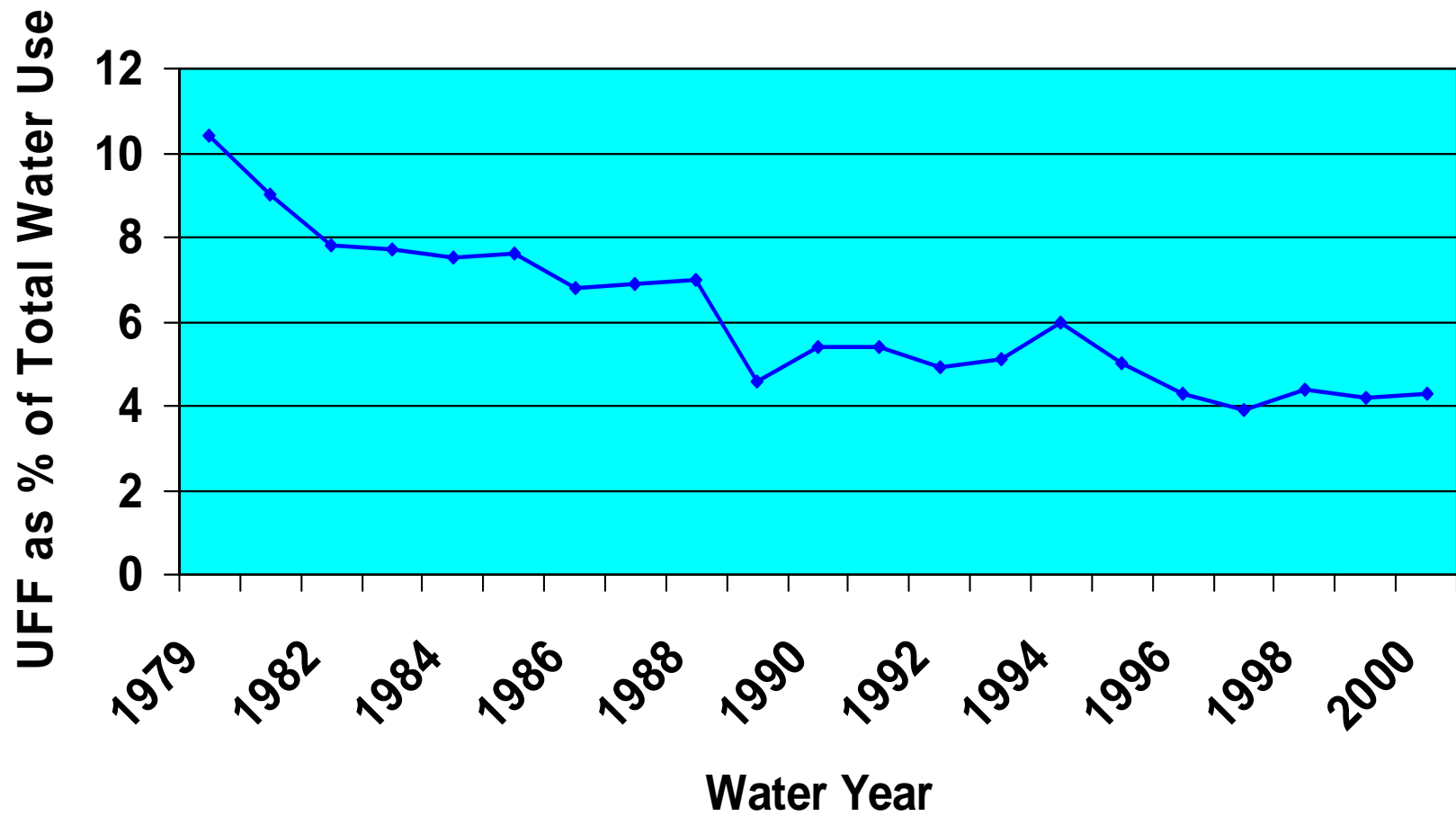
- Phoenix - \$2.85
- New York - \$3.48
- Denver - \$2.75
- Detroit - \$2.36
- Los Angeles - \$4.87
- Chicago - \$2.00
- Avg. L.M. - \$5.22

Conservation Requirements for PWS Owners

- **UNACCOUNTED FOR FLOW** shall not exceed 8% of a water system's total pumpage.

“UNACCOUNTED FOR FLOW” means the amount of water supplied to a system (including the components of transmission, distribution, storage, and pumping) which is lost from the system prior to delivery to the end user. Unaccounted for flow includes water not accounted for due to under registration of meters and water lost due to main breaks.

Average Unaccounted-For-Flow In Lake Michigan Communities



Unavoidable Leakage is that amount of water lost from a well maintained water system

Cast iron pipe w/lead joints

Greater than 60 yrs	3000 gal/day/mi.
40-60 yrs	2500 gal/day/mi
20-40 yrs	2000 gal/day/mi
Less than 20 yrs	1500 gal/day/mi

All other type of pipe

Greater than 60 yrs	2500 gal/day/mi
40-60 yrs	2000 gal/day/mi
20-40 yrs	1500 gal/day/mi
Less than 20 yrs	1000 gal/day/mi



Lake Michigan Water Allocation Website:

<http://dnr.state.il.us/owr/LakeMichiganWaterAllocation.htm>